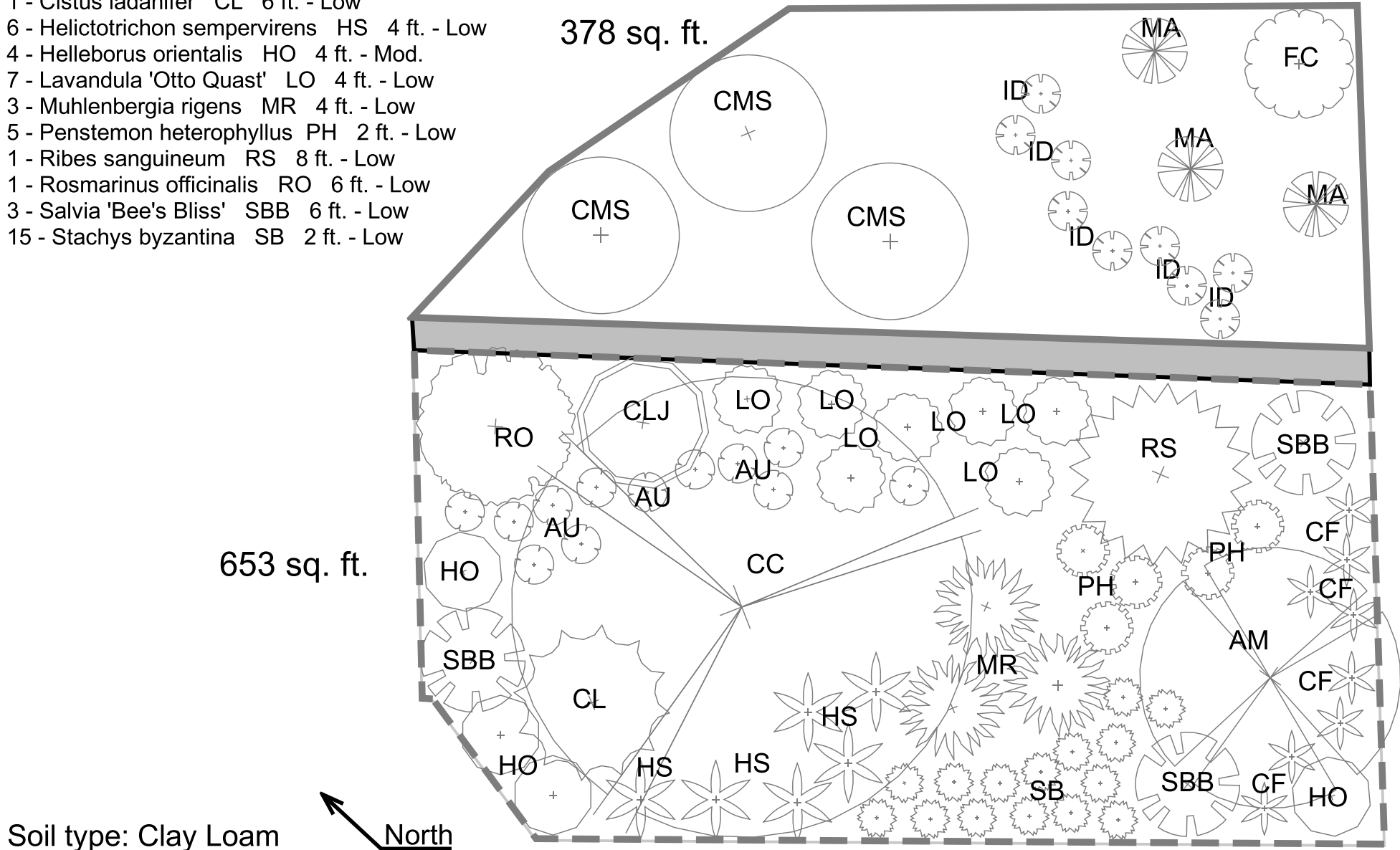


### Dense Zone Line Source (dashed)

- 1 - Arbutus 'Marina' AM 10 ft. - Low
- 12 - Arctostaphylos uva-ursi AU 2 ft. - Low
- 8 - Calamagrostis foliosa CF 2 ft. - Mod.
- 1 - Callistemon 'Little John' CLJ 6 ft. - Low
- 1 - Cercis canadensis CC 18 ft. - Mod.
- 1 - Cistus ladanifer CL 6 ft. - Low
- 6 - Helictotrichon sempervirens HS 4 ft. - Low
- 4 - Helleborus orientalis HO 4 ft. - Mod.
- 7 - Lavandula 'Otto Quast' LO 4 ft. - Low
- 3 - Muhlenbergia rigens MR 4 ft. - Low
- 5 - Penstemon heterophyllus PH 2 ft. - Low
- 1 - Ribes sanguineum RS 8 ft. - Low
- 1 - Rosmarinus officinalis RO 6 ft. - Low
- 3 - Salvia 'Bee's Bliss' SBB 6 ft. - Low
- 15 - Stachys byzantina SB 2 ft. - Low

### Sparse Zone - Point Source (solid)

- 1 - Frangula californica FC 4 ft. - Low
- 3 - Mimulus aurantiacus MA 3 ft. - Low
- 9 - Iris douglasiana 'Canyon Snow' ID 2 ft. - Low
- 3 - Ceanothus 'Marie Simon' CMS 6 ft. - Low



Soil type: Clay Loam

North